



## create your own tour

Visit as many listed farms below as you wish during the scheduled "farm tour" times. Each address is listed below for you to create your own fulfilled afternoon with our local farming community

### NORTH LOOP

**North Harvest Farm** [CSA]  
53206 Golf Course Road,  
Calumet, Michigan

**HOURS** One time opportunity as this farm is currently not open to the public.

**Pancho's Wild Blueberries**  
34349 Traverse Road  
[at Rice Lake],  
Lake Linden, Michigan

**HOURS** Open Daily Open daily from 9:00 am until 6:00 pm. [July 15th to September 30th]

### SOUTH LOOP

**G&A Garden Center**  
400 West Sharon Avenue, Houghton, Michigan

**HOURS** Monday - Saturday  
10:00 am - 5:00 pm

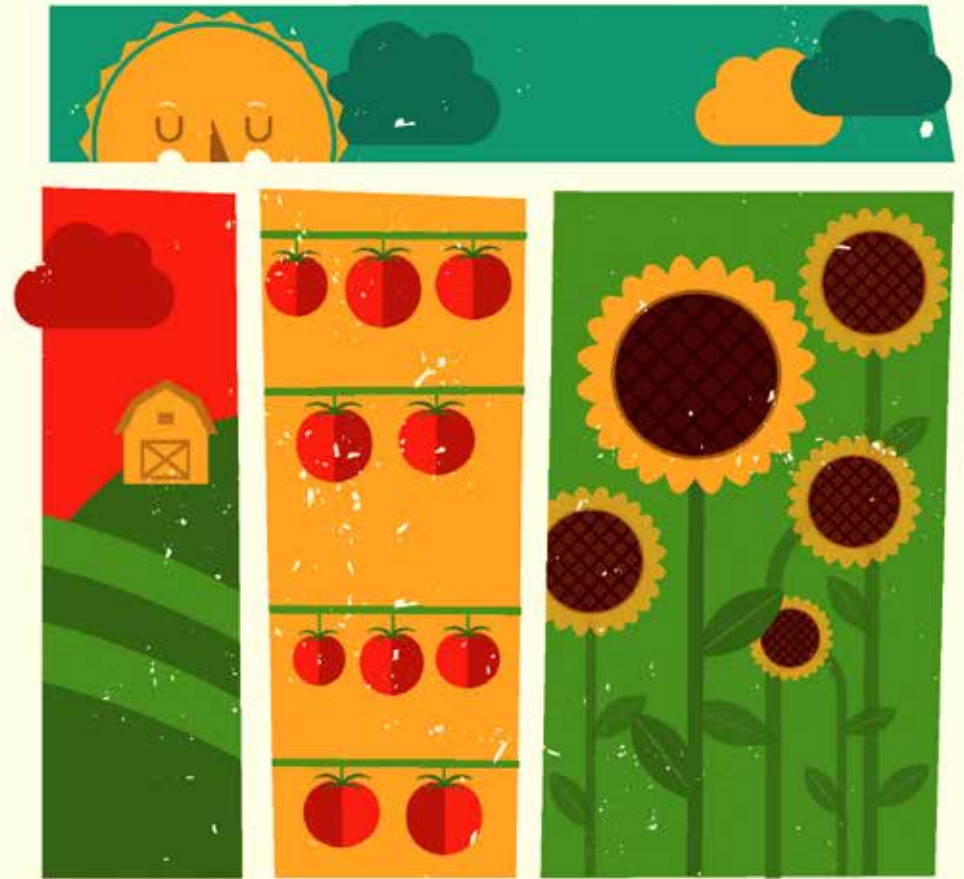
**Metsa Hill Farm** [CSA]  
44051 Baltic Onkalos  
Corner Road [1.5 Miles South of  
South Range],  
Atlantic Mine, Michigan

**HOURS** By arrangement.  
Call Keren at 487-9060.

**Gagnon Farm**  
[Farm Stand Only]  
5138 Gagnon Road  
Atlantic Mine, Michigan

**HOURS** Monday-Friday,  
Sunday 9:00 am - 7:00 pm

**Osma Acres Farm**  
53465 Osma Acres Road,  
Stanton Township  
**HOURS** Thursday/Friday  
4:00 pm - 6:00 pm & Saturdays  
from 9:00 am - 1:00 pm



# farm 17 tour keweenaw

august 27 \* noon to 5:00 pm

sponsored by...



Where your imagination takes flight

Join the Co-op Bike Team at 11:30 am outside the store for an exciting ride, or pack up the kiddos in the family car for a self-guided tour during the scheduled “farm tour” hours.



We invite you to partake in the first Annual “Farm Tour” of the Keweenaw’s local farms Sunday, August 27th from Noon to 5:00 pm. This is an excellent opportunity to see how our local farmers grow and provide healthy food for our community.



**1) North Harvest Farm\***  
US-41 between Hancock and Calumet on Golf Course Road (old Hughes Farm).  
**Currently Available:** Colorful Peppers & Fingerling Potatoes, Romanesco and Cauliflower

**2) Poncho's Blueberry Farm**  
Wild and cultivated blueberries. Located approx 10 miles from Lake Linden via Rice Lake Road.  
**Currently Available:** Blueberries and Michigan Peaches

**3) G&A Garden Center**  
On-site garden center and market located right on Sharon Avenue in Houghton.  
**Currently Available:** Wide Variety of Fruits, Veggies and Herbs, Edible and Ornamental Plants

**4) Metsa Hill Farm\***  
Focusing on shiitake and other cultivated mushrooms. From the intersection of 12th St and Elsie in Baltic, head south 1.3 miles  
**Currently Available:** Shiitake, Oyster, Wine Cap Mushrooms

**5) Gagnon Farm Farm Stand Only—**  
Long established family farming history located off Coles Creek Road. [No Farm Tour]  
**Currently Available:** Beets, Carrot, Potatoes, Onions, Snap Beans and More

**6) Osma Acres Farm**  
Family owned and operated farm. Take Houghton Canal Road to Osma Acres Road.  
**Currently Available:** Eggplant and Tomatoes

\* Designates Farm as **CSA** (Community Supported Agriculture) — CSA's generally focus on the production of high quality foods/produce for a local community, often using organic or biodynamic farming methods, and a shared risk membership–marketing structure.